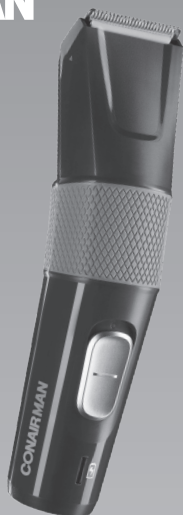


CONAIRMAN



THE COMPLETE CUT

TOOL TIPS

precision hair clipping & beard trimming at home.

VSM795A

HERE YOU ARE.

RIGHT WHERE YOU NEED TO BE, MAN.

FROM THE STREETS OF
BROOKLYN, NEW YORK

**WE ARE CHANGE
MAKERS & STYLE CREATORS.**

WE'VE FOUGHT OUR WAY INTO
YOUR HANDS TO HELP YOU CRAFT
**A REPUTATION, NOT JUST ENGAGE
IN SOME BRILLIANT GROOMING.**

KNOW YOUR WORTH, INVEST IN IT MAN & CHECK OUT OUR INSIDER
KNOWLEDGE, TIPS & TRICKS TO MAKE THE MOST OF THE STYLE PATH
YOUR FEET ARE FIRMLY PLANTED ON. GIDDY UP, IT'S GROOMING TIME.

CHECK OUT CONAIRMAN.COM.AU FOR GROOMING TIPS
& KNOW HOW TO LET YOU CRAFT A REPUTATION

CONAIRMAN™

**CRAFT A
REPUTATION,
MY MAN**

IMPORTANT SAFETY INSTRUCTIONS

When using electrical appliances, especially when children are present, basic safety instructions should always be followed, including the following:

Polythene bags over product or package may be dangerous. To avoid danger of suffocation, keep this wrapper away from babies and children. This bag is not a toy.

DANGER: When the unit is used in a bathroom, unplug it after use since the proximity of water presents a hazard even when the appliance is switched off.



WARNING: Do not use or leave the adaptor in a position where it can become wet or there is a danger of it falling into a basin or other vessels containing water. Keep the appliance dry, unless it otherwise specified. Do not use this appliance in or near bathtubs, showers, basins or other vessels containing water.

- Do not immerse appliance in water or other liquids.
- Do not reach for an appliance that has fallen into water. Unplug immediately.
- Take care to avoid contact between the moving blades of the unit and the skin, paying particular attention to the face, neck and hands.
- This appliance is not intended for use by persons (including children) with reduced physical, sensory or mental capabilities, or lack of experience and knowledge, unless they have been given supervision or instruction concerning use of the appliance by a person responsible for their safety.
- Children should be supervised to ensure that they do not play with the appliance.

WARNING: For purposes of recharging battery, only use detachable supply unit CA10 provided with this appliance.

IMPORTANT: Always ensure the appliance is switched off when not in use or before cleaning. Do not leave unattended when switched on. Do not place on any heat sensitive surface.

- Do not use any attachments other than those supplied by Conair Australia Pty Ltd.
- Use this appliance only for its intended use as described within this instruction booklet.
- Always unplug the appliance when fully charged.
- This appliance is not intended for commercial use.
- Never drop or insert any object into an opening.
- Do not use the appliance with damaged or broken attachment combs or with any teeth missing from the blades, as injury may occur.
- Do not place on any surface while it is operating.
- Keep the cord away from heated surfaces
- Never twist or pull on the power cord.
- Do not use an extension cord with this appliance.
- After use do not wrap the cord around the appliance as in time this may cause the cord to fracture. Coil cord loosely by the side of the appliance in storage.
- Do not use outdoors or operate where aerosol (spray) products are being used or where oxygen is being administered.
- Do not use the appliance if it is damaged. In the event of damage, discontinue use immediately and contact your dealer for instructions on returning it for examination or exchange. If the supply cord is damaged, it must be replaced by the manufacturer, its service agent or similarly qualified person in order to avoid a hazard.
- Always ensure that the voltage to be used corresponds to the voltage marked on the unit.
- For additional protection, the installation of a residual current device (RCD) with a rated operating current not exceeding 30mA is advisable in the electrical current circuit supplying the bathroom. Ask your installer for advice.

THE COMPLETE CUT

HEY MAN, IT'S CLIPPING TIME.

The Complete Cut is the ideal tool for precision hair clipping & beard trimming at home.



1. Hair cutting guide from 2 to 24 mm - the "hair" icon is printed on the comb guide above the cutting length numbers
2. Beard cutting guide from 2 to 16 mm - the "beard" icon is printed on the comb guide above the cutting length numbers
3. 39mm stainless steel professional blades: Washable, removable for easy cleaning



4. ON/OFF switch
5. Charging indicator light
6. Cord/cordless use
7. Travel bag
8. Cleaning brush
9. Oil

PREPPING YOUR NEW TOOL

CHARGING

The Complete Cut is so easy to use. But before you start using your new tool, you must take the time to charge it overnight for 16 hours before its first use. Your new tool comes with a small amount of charge, but the initial charge will ensure your new tool will have optimum power performance to give you smooth fast cutting, every time.

- Before using for the first time, fully charge your new tool continuously for **16 hours**.
- Maximum battery capacity will only be reached after 3 charging & discharging cycles (one cycle of 16 hours followed by two cycles of 8 hours).
- Ensure your new tool is switched off.
- Insert the small plug on the charging adaptor into the socket on the bottom of your new tool.
- Plug the charging adaptor into a suitable mains power socket & switch on.
- The red charging LED indicator light on your new tool will light up when correctly connected to the mains power. The charging light will not flash or turn off to indicate when charged & will remain on whilst charging.
- A full charge will supply up to 40 minutes cordless runtime.
- Subsequent recharges will only require 8 hours charging time.
- To maintain optimum capacity of the rechargeable battery, it is highly recommended to fully discharge & then recharge your tool for 16 hours every 3 months.

CORDED USE

To use The Complete Cut connected to mains power:

- Insert the small plug on the charging adaptor into the socket on the bottom of your new tool.
- Plug the charging adaptor into a suitable mains power socket & switch on.
- Switch the trimmer on – NOTE – if the battery is weak & low on battery charge, wait approx. 1min before switching the trimmer on.

HOW TO USE THE COMPLETE CUT

BEFORE USING

- Always inspect The Complete Cut blades for noticeable signs of damage.
- Always inspect The Complete Cut blades before use to ensure they are free from hair, debris etc.
- Ensure The Complete Cut is sufficiently charged before use.
- For best performance use on clean, dry hair that has been combed until tangle-free
- Do not shave on open wounds, cuts, burns, warts, moles or on sunburned skin.

SELECTING A CUTTING LENGTH

Your Complete Cut comes with 2 specifically designed comb guides, a hair comb guide (2mm to 24mm) for creating a range of hairstyles at home, & a beard comb guide (2mm to 16mm) for crafting short stubble or maintaining your longer beard. 2mm increments allow for a controlled finish, as you pick your desired cutting length.

GOOD TO NOTE: Always put the comb guide on **BEFORE** turning The Complete Cut on, & turn the trimmer off before removing it.

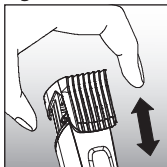
Very practical, the cutting guides guarantee equal cutting length.

To put in or remove the cutting guide, check that the clipper is switched off. Align & slide the Hair Comb Guide into the groove on both sides of the clipper & gently push down to secure into place. To adjust the length settings, depress the back of the comb guide with your thumb & slide the guide to the desired length setting on shown on the side of the comb guide to align with the orange ► (Fig. 1).

Ensure you use the correct comb guide for each purpose, as the hair comb guide has been design specifically for hair cutting only & the beard comb guide for trimming beards & facial hair only.

Note: You can use the appliance without a cutting guide to cut hair at skin level (0.5 mm), to redefine the contours (nape of the neck, sideburns...).

Fig. 1



BEARD & STUBBLE TRIMMING TIPS

CHECK OUT CONAIRMAN.COM.AU FOR GROOMING TIPS & KNOW HOW TO LET YOU CRAFT A REPUTATION

USING THE BEARD COMB GUIDE



1. Ensure you only attach the specially designed beard comb guide.
2. Switch the trimmer on by sliding the On/Off switch upwards so that the "I" marking is visible.
3. Select your desired cutting length. To adjust the cutting length of your trimmer, simply adjust the beard comb guide to the desired cutting length, matching the orange arrow to the length marked on the comb.
4. When trimming, hold the comb guide flat against the skin. For the most precise, consistent trim, the tips of the teeth & the little corners protruding from the comb should always be in contact with the skin. If not, the precision of the cut may change. (Fig. 2-3).
5. It is suggested to trim the hair in the direction of hair growth, as trimming against the direction of growth could cause a rash or irritation.
6. Pull the skin firmly with one hand during the trimming process to ensure the closest trim possible.
7. Move the trimmer slowly & carefully, so as not to cut any hair you do not intend to trim.
8. Trim, shape & define your facial hair as needed.

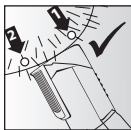


Fig. 2

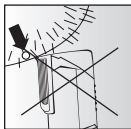


Fig. 3

BE CAREFUL NOT TO APPLY EXCESS PRESSURE TO THE BLADE, AS THIS MAY DAMAGE THE BLADE AND CAN RESULT IN INJURY TO THE SKIN DURING TRIMMING.

HAIR CLIPPING TIPS

USING THE HAIR COMB GUIDE



1. Ensure you only attach the specially designed hair comb guide.
2. Ensure the clipper is switched off.
3. Attach the Hair Comb Guide & adjust to your desired length & click into place.
4. Switch The Complete Cut on – the blades will start to move.
5. Start cutting at the nape of the neck, holding the clipper with the teeth of the clipper pointing upwards, ensuring that the comb guide is resting flat against the head.
6. Slowly move the clipper upwards & outwards through the hair towards your crown, against the direction of the hair growth. The comb guide will help to lift the hair & the blades will cut the hair to the length as shown on the comb guide.
7. Once the desired length is achieved at the back of the hair, start clipping the top & sides.
8. Hold The Complete Cut to the front of your hair with the teeth pointing towards the back of your head, & move the clipper towards your crown. Repeat as necessary, moving in rows from the front & the sides of your head to the back.
9. For finishing around the ears, select a shorter length & trim down any longer hairs around the ears.

CREATING A SHORT BACK & SIDES LOOK, WITH LENGTH ON THE TOP



1. Ensure you only attach the specially designed hair comb guide.
2. Ensure the clipper is switched off.
3. Attach the Hair Comb Guide & adjust to your desired length & click into place.
4. Switch The Complete Cut on – the blades will start to move.
5. Hold the clipper to the front of your hair with the teeth pointing towards the back of your head & move The Complete Cut towards your crown. Repeat as necessary, moving in rows from the front & the sides of your head to the back.
6. If you then wish to take the back & sides of your hair to a shorter length, simply select a shorter length (see instructions on page 9) .
7. Start cutting at the nape of the neck, & with the comb guide flat against the head, move the clipper upwards & outwards over the area you want to take shorter.
8. Repeat on the sides of the hair, starting with the teeth of The Complete Cut pointing upwards & comb guide flat against the area above the ear, again moving The Complete Cut upwards & outwards.

CLEANING & MAINTENANCE

Because The Complete Cut blades are precision made for a very special use, they should always be handled with care. To ensure long-lasting performance of your The Complete Cut, it is important to clean the blades + the comb guide after every use.

To remove the trimming blade, make sure that the trimmer is switched off & the cutting comb guide is removed. Hold The Complete Cut with the blades pointing up & remove them by pressing their points (Fig. 4).



Fig. 4

To clean the blades:

1. First, take a small brush & brush away any loose hairs that have collected in the blades.
2. Rinse the blades under running water. The comb guide can also be rinsed separately.
3. After cleaning, make sure to shake off excess water & dry the head of the blades + comb guide before replacing onto the handle.

OILING THE BLADES

After cleaning, switch the appliance on, & oil the blades by adding a few drops of the oil supplied over the blades.





Only use the lubricating oil supplied with this appliance as this is specifically formulated for high speed clippers & does not evaporate or slow the blades.

SPARE PARTS

Contact customer service on availability of spare parts for this model at aus_info@conair.com

WORLDWIDE VOLTAGE

This appliance has a multi voltage feature for worldwide use. The voltage automatically converts for ease of use from 100v - 240v. This appliance has an automatic internal converter which will automatically convert the voltage without the need of a switch. A suitable plug adaptor will be required, please refer to the chart below.

| Plug adaptor required | Voltage and plug adaptors | Country | Voltage setting |
|--|--|---|-----------------|
|  | British plug: 240V | Ireland, Great Britain, Singapore, South America, Hong Kong (parts only), Africa (parts only) | 240V |
|  | European plug: 240V | Asia, Europe, Middle East Noumea, Scandinavia, South America, Hong Kong (parts only) | 240V |
|  | Australian and New Zealand plug: 230-240V | Australia, New Zealand | 230-240V |
|  | American plugs: 120V | North America, Japan, Canada (parts of) | 120V |

BATTERY DISPOSAL

The Complete Cut contains a Nickel Metal-Hydride battery. To protect the environment, the appliance must be disposed of safely at the end of its useful life.



Please take the appliance to a recycling centre, where the internal rechargeable battery should be removed by a professional and recycled separately.

For more information about the recycling of electrical and battery operated appliances, please contact your local council office or your household waste disposal service.

WARRANTIES

1. In this warranty document ("Warranty Document"), "Conair", "we" or "us" means:
 - Conair Australia Pty Limited (ABN 64 068 492 044) of The Equinox Centre, Suite 101, 18 Rodborough Rd, Frenchs Forest, NSW, 2086, in relation to products purchased in Australia; or Conair New Zealand Ltd of Conair New Zealand Limited, PO BOX 251159 Pakuranga, Auckland 2140, New Zealand in relation to products purchased in New Zealand.
 - Nothing in this Warranty Document limits or reduces (or purports to limit or reduce) any statutory guarantees pursuant to the Australian Consumer Law for Australian customers or the Consumer Guarantees Act 1993 for New Zealand customers.
 - If you have any questions about the product you have purchased in either Australia or New Zealand, please contact us on 1800 650 263 (for Australian customers) or 0800 266 247 (for New Zealand customers). Further contact details are set out at the bottom of this Warranty Document.

STANDARD 2 YEAR (24 MONTH) WARRANTY

2. **AUSTRALIA:** Our goods come with guarantees that cannot be excluded under the Australian Consumer Law. You are entitled to a replacement or refund for a major failure and compensation for any other reasonably foreseeable loss or damage. You are also entitled to have the goods repaired or replaced if the goods fail to be of acceptable quality and the failure does not amount to a major failure.
NEW ZEALAND: Our goods come with guarantees that cannot be excluded under the Consumer Guarantees Act 1993. This guarantee applies in addition to the conditions and guarantees implied by that legislation.
3. Conair's name, postage address, email and phone number are available at the bottom of this Warranty Document, under "Contact Information".
4. This Standard 2 Year (24 Month) Warranty ("Standard Warranty") applies for a period of 2 years (24 months) from the date that you purchased your product ("Standard Warranty Period"). For clarity, the relevant defect must appear within the Standard Warranty Period timeframe for this Standard Warranty to apply.
5. If your product is defective, and the product is covered under this Standard Warranty, you should, in the first instance, take the product back to the place you purchased it from or

contact us directly if you are unable to take the product back to the place of purchase. The procedure for claiming under this Standard Warranty is as detailed below.

6. To make a Standard Warranty claim, you will need to return the defective product back to the place it was purchased where it will be assessed under this Standard Warranty. Or if you are unable to return the defective product back to the place of purchase, you will need to call our Customer Service team on 1800 650 263 (for Australian Customers) or 0800 266 247 (for New Zealand customers) or send an email to the email address provided below under 'Contact Information'.
7. **In order to make a claim under this Standard Warranty, you will need to provide the following details to Conair:**
 1. **Date of purchase**
 2. **Retailer name & location**
 3. **Product model number & name**
 4. **Confirm you have your purchase receipt**
 5. **Detail the problem with your product.**
8. If you make a Standard Warranty claim directly with us, we will ask for you to send us back the defective product along with the purchase receipt. To do this, please head to your local post office and send to the product to our reply paid address which is: Replied Paid 146, PO Box 146, Terrey Hills NSW 2084. For clarity, we will be responsible for covering the cost of postage to the above replied paid address.
9. Once we receive your product, we assess it accordingly. Upon analysing the defect, we will either: a) have the product replaced and sent back to you; or b) refund you (either in part or in full).
10. The benefits provided to you under this Standard Warranty are in addition to other rights and remedies available to you under consumer law.
11. Within the Standard Warranty Period, if your product suffers a defect in the materials or workmanship, Conair will either refund or replace your product, in our sole discretion, for no charge.
12. Under this Standard Warranty, we do not have to refund, repair or replace your product if the product's defect or damage is a result of misuse, abuse, accident, act of God such as lightning, or nonobservance of Conair's instruction booklet on the part of the user.
13. The Standard Warranty does not cover ordinary wear and tear of the product.
14. This Standard Warranty is immediately void if: a) any serial number or product plate is removed or defaced, or b) the product has been serviced or otherwise repaired by a person

not authorised to do so by Conair or where non-approved replacement parts are used.

15. You are aware that the product is designed for domestic use only and that it must be connected to the electrical voltage supply as specified in the ratings label located on the product itself and detailed in the product's instruction booklet. The Standard Warranty does not cover defects arising from non-domestic use or use of incorrect voltage supply.
16. This Standard Warranty may only be claimed where proof of original purchase is presented, for example, original receipt or invoice.
17. The Standard Warranty on any replacement product or parts will expire on the same date that the Standard Warranty Period on the original product expires, as far as the law permits.
18. In order to obtain a remedy under this Standard Warranty, the defect must have occurred during the this Standard Warranty Period and you (as the purchaser) bear the onus of proving that fact, and that the defect was not caused by any of the exclusions above.
19. This Standard Warranty does not cover any product purchased from any entity who is not an authorised Conair distributor or reseller. For clarity, all warranties are only enforceable in Australia and New Zealand.
20. To the fullest extent permitted by law, Conair does not accept liability for: a) any loss or damage however suffered, caused by or arising out of any failure to use a product in accordance with Conair's instruction booklet; and b) any indirect, consequential or economic loss or damage however caused.
21. We will be responsible for all postage and freight charges and any other expenses incidental to claiming under the Standard Warranty, however you must send the product back to our Reply Paid address (which is: Replied Paid 146, PO Box 146, Terrey Hills NSW 2084).
22. If your product is defective, and the product is covered by this Standard Warranty, you should take the product back to the place you purchased it from or contact us directly using the contact information provided in the Contact Information section below.
23. To honour the Standard Warranty, you must retain your proof of original purchase, for example, original receipt or invoice and you must present the proof of original to obtain replacement, refund or service under this Standard Warranty, alongside your defective product.
24. You understand that the Standard Warranty may only be claimed where proof of original purchase is presented, i.e. original purchase receipt or invoice. When asked to do so, please provide your proof of original purchase along with the requested information/defective item.

SPARE PARTS

25. Replacement parts may be available for your product. Contact us on the phone or email address provided for more details. Please provide your product name/model number details, date of purchase and part you require.

CONTACT INFORMATION

Conair Australia Pty Ltd

PO Box 146 Terrey Hills NSW 2084

Customer Service

Australia

1800 650 263

email: aus_info@conair.com

Conair New Zealand Ltd

PO Box 251159 Pakuranga, Auckland New Zealand 2140

Customer Service

New Zealand

0800 266 247

email: aus_info@conair.com



©2023 Conair Australia Pty. Ltd.
Suite 101, 18 Rodborough Rd
Frenchs Forest NSW 2086
Australia

Conair New Zealand Limited
PO BOX 251159
Pakuranga, Auckland 2140
New Zealand

CONTACT US

For advice & tips on your new ConairMan product email us on:
aus_info@conair.com

CUSTOMER SERVICE

Australia: 1800 650 263
New Zealand: 0800 266 247

Check out CONAIRMAN.COM.AU for grooming tips & know how to let you craft a reputation.

CONAIRMAN™

**CRAFT A
REPUTATION,
MY MAN**