

CONAIRMAN



THEGROOMCAPTAIN

TOOL TIPS

for the multi-purpose
face & body trimmer

VSM726SA

HERE YOU ARE.

RIGHT WHERE YOU NEED TO BE, MAN.

FROM THE STREETS OF
BROOKLYN, NEW YORK

**WE ARE CHANGE
MAKERS & STYLE CREATORS.**

WE'VE FOUGHT OUR WAY INTO
YOUR HANDS TO HELP YOU CRAFT
**A REPUTATION, NOT JUST ENGAGE
IN SOME BRILLIANT GROOMING.**

KNOW YOUR WORTH, INVEST IN IT MAN & CHECK OUT OUR INSIDER
KNOWLEDGE, TIPS & TRICKS TO MAKE THE MOST OF THE STYLE PATH
YOUR FEET ARE FIRMLY PLANTED ON. GIDDY UP, IT'S GROOMING TIME.

CHECK OUT **CONAIRMAN.COM.AU** FOR GROOMING TIPS
& KNOW HOW TO LET YOU CRAFT A REPUTATION

CONAIRMAN™

**CRAFT A
REPUTATION,
MY MAN**

IMPORTANT SAFETY INSTRUCTIONS

When using electrical appliances, especially when children are present, basic safety instructions should always be followed, including the following:

Polythene bags over product or package may be dangerous. To avoid danger of suffocation, keep this wrapper away from babies and children. This bag is not a toy.

DANGER: When the unit is used in a bathroom, unplug it after use since the proximity of water presents a hazard even when the appliance is switched off



WARNING: Do not use or leave the AC power adaptor in a position where it can become wet or there is a danger of it falling into a basin or other vessels containing water. Keep the appliance dry, unless it otherwise specified. Do not use this appliance in or near bathtubs, showers, basins or other vessels containing water.

- Do not immerse appliance in water or other liquids.
- Do not reach for an appliance that has fallen into water. Unplug immediately.
- Take care to avoid contact between the moving blades of the unit and the skin, paying particular attention to the face, neck and hands.
- This appliance is not intended for use by persons (including children) with reduced physical, sensory or mental capabilities, or lack of experience and knowledge, unless they have been given supervision or instruction concerning use of the appliance by a person responsible for their safety.
- Children should be supervised to ensure that they do not play with the appliance.
- For purposes of recharging battery, only use detachable supply unit provided with this appliance.

IMPORTANT: Always unplug the trimmer when not in use or before cleaning. Do not leave unattended when plugged in or switched on. Do not place on any heat sensitive surface.

- Do not use any attachments other than those supplied by Conair Australia Pty Ltd.
- Use this appliance only for its intended use as described within this instruction booklet.
- Always unplug the appliance when fully charged.
- This appliance is not intended for commercial use.
- Never drop or insert any object into an opening.
- Do not use the appliance with damaged or broken attachment combs or with any teeth missing from the blades, as injury may occur.
- Do not place on any surface while it is operating.
- Keep the cord away from heated surfaces
- Never twist or pull on the power cord.
- Do not use an extension cord with this appliance.
- After use do not wrap the cord around the appliance as in time this may cause the cord to fracture. Coil cord loosely by the side of the appliance in storage.
- Do not use outdoors or operate where aerosol (spray) products are being used or where oxygen is being administered.
- Do not use the appliance if it is damaged. In the event of damage, discontinue use immediately and contact your dealer for instructions on returning it for examination or exchange. If the supply cord is damaged, it must be replaced by the manufacturer, its service agent or similarly qualified person in order to avoid a hazard.
- Always ensure that the voltage to be used corresponds to the voltage marked on the unit.
- For additional protection, the installation of a residual current device (RCD) with a rated operating current not exceeding 30mA is advisable in the electrical current circuit supplying the bathroom. Ask your installer for advice.

THE GROOM CAPTAIN

STEP UP, IT'S GROOMING TIME.

The Groom Captain is the multi-purpose face & body trimmer.



1. Diamond sharpened blades
2. Washable blades
3. Cordless use
4. 34mm trimming blade
5. Foil shaver
6. Rotary blade for nose & ear hair trimming
7. 3 easy-fit beard comb guides (5mm, 7mm & 9mm) to trim, blend & fade

8. 6 position short beard & stubble comb guide (1mm to 3.5mm) for all-over trimming & shaping of short beard or stubble
9. 3mm body comb guide to keep your manscaping game on point
10. Storage pouch
11. Cleaning brush
12. Oil

PREPPING YOUR NEW TOOL

CHARGING

The Groom Captain is so easy to use. But before you start using your new tool, you must take the time to charge it overnight for 16 hours before its first use. Your new tool comes with a small amount of charge, but the initial charge will ensure your new tool will have optimum power performance to give you smooth fast cutting, every time.

INSTRUCTIONS FOR USE

IMPORTANT! Only use the charging unit & attachments supplied with this trimmer.

Charging Instructions

- This trimmer is equipped with Ni-MH batteries
- Before using for the first time, allow it to charge for two consecutive full charges (twice 8 hours). This initial super-charge ensures optimum power performance to ensure smooth fast trimming every time.
- Maximum battery capacity will only be reached after 3 charging & discharging cycles.
- Ensure the trimmer is switched off.
- Plug the charging unit into a suitable mains socket.
- The red charging indicator light will illuminate when the trimmer is plugged in & connected to the mains. The red charging indicator light will switch off once the trimmer is fully charged.
- A full 8 hours charge will supply enough power for 60 minutes of use.

- For the 16 hour supercharge before your first use, plug the charging unit into a suitable mains socket & once the red charging indicator light is illuminated, allow the trimmer to charge for 8 hours. The red charging indicator light will switch off once the trimmer is fully charged. Unplug the trimmer & then plug in once again for another full 8 hour charge.

Preserving the batteries

- In order to maintain the optimum capacity of the rechargeable batteries, the trimmer should be fully discharged & then recharged for 8 hours every 3 months.

HOW TO USE THE GROOM CAPTAIN

BEFORE USING

- Always inspect the trimmer before use for noticeable signs of damage. Do not use if damaged.
- Ensure the heads are free from hair & debris & that the blades are properly oiled (refer to Cleaning & Maintenance section for further information). Subsequent charges should be 8 hours & the red charging indicator light will switch off when the unit is fully charge.
- Ensure the trimmer is sufficiently charged.
- If the foil is cracked, broken or loose, do not use it again & replace with a new foil. Using a foil in a faulty condition can cause injury.
- Do not shave on open wounds, cuts, burns, warts, moles or on sunburned skin.
- Do not use the foil shaver if you suffer from skin irritations or infections, such as psoriasis or eczema. If at all unsure always consult your doctor before use.

CHANGING THE HEADS

1. Before changing the heads, ensure the trimmer is switched off.
2. To remove a head, hold the handle of the trimmer with one hand, hold the head with the other hand & push up from under the blades to lift the head up & away from the handle.
3. To attach a head, line up the back of the attachment head with the holding section on the trimmer (See Fig. 1).
4. Then line up the two front prongs of the attachment head with the two metal clips on the handle (See Fig. 2).
5. These prongs on the head should rest on top of the metal clips from the handle (See Fig. 3).
6. Click the head down on to the trimmer

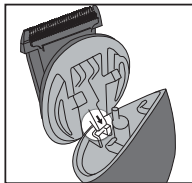


Fig. 1

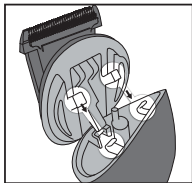


Fig. 2

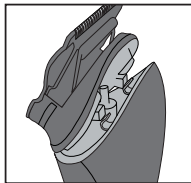


Fig. 3

TRIMMING TIPS

CHECK OUT CONAIRMAN.COM.AU FOR GROOMING TIPS & KNOW HOW TO LET YOU CRAFT A REPUTATION

USING THE 34MM TRIMMING BLADE

The 34mm trimming blade has been designed for stubble, beard & moustache trimming + shaping, , as well as manscaping when used with the 3mm body comb guide.

The following comb guides are for use with the 34mm trimming blade:

- 3 beard comb guides (5mm, 7mm & 9mm) for easy blending & fading
- 6 position short beard & stubble comb guide (1mm to 3.5mm) for all-over trimming & shaping of short beard or stubble
- 3mm body comb guide to keep your manscaping game on point

The 34mm trimming blade can also be used without any comb guide attached to outline & for an even closer finish.

BE CAREFUL NOT TO APPLY EXCESS PRESSURE TO THE BLADE, AS THIS MAY DAMAGE THE BLADE AND CAN RESULT IN INJURY TO THE SKIN DURING TRIMMING.

ATTACHING THE COMB GUIDES TO THE TRIMMER

1. Slide the trimmer teeth & the top of the blades into the space under the comb guide. (Fig. 7)
2. Click the guide into position by gently pressing the back of the guide down to the back of the blade. (Fig. 8) The comb guide should click under the back of the metal blade.

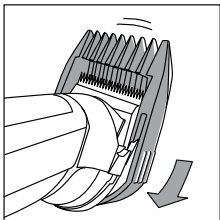


Fig. 7

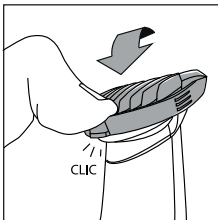


Fig. 8

USING THE 34MM TRIMMING BLADE WITH THE 6 POSITION SHORT BEARD & STUBBLE COMB GUIDE

1. The adjustable 6 position short beard & stubble comb guide allows you to take control of the length of your stubble to the ideal length between 1mm-3.5mm. You will need to experiment to find your preferred length, but as a guide, 1mm will give you a very short stubble look & 3.5mm will be a short, neater beard.
2. To attach the 6 position short beard & stubble comb guide, slide the comb guide onto the front of the 34mm trimming blade & push down at the rear to lock into place – you will hear a clicking noise when it's in position.
3. The comb guide has 6 length settings, 1 mm, 1.5 mm, 2 mm, 2.5 mm, 3mm & 3.5mm. To adjust the cutting length, push the button & click the comb guide forward to the required position.

4. Select the required cutting length setting (1-3.5 mm). If you require more than one cutting length, start with the longest length first.
5. Switch the trimmer on.
6. Hold the trimmer with the teeth of the trimmer pointing upwards, yet flat against the skin.
7. Move the trimmer upwards & outward through the hair, against the direction of hair growth.
8. The trimmer will work most efficiently when cutting through hair at its own speed.
9. To remove the 6 position short beard & stubble comb guide, gently lift the guide off the head by lifting the rear section.

USING THE 34MM TRIMMING BLADE WITH THE 3 BEARD COMB GUIDES

1. Attach the comb guide as shown in ATTACHING THE COMB GUIDES TO THE TRIMMER section.
2. The beard combs guides come in 3 different length settings: I = 5 mm, II = 7 mm & III = 9 mm.
3. If you require more than one cutting length, start with the longest length first (7mm).
4. Switch the trimmer on.
5. Hold the trimmer with the teeth of the trimmer pointing upwards, yet flat against the skin.
6. Move the trimmer upwards & outward through the hair you wish to blend.
7. To blend-in a shorter length use a smaller beard comb & use in the same way as above.
8. The trimmer will work most efficiently when cutting through hair at its own speed.
9. To remove beard comb guide, lift the rear of the guide upward & away from the 34mm trimming blade head.

USING THE 34MM TRIMMING BLADE WITH THE 3MM BODY COMB GUIDE

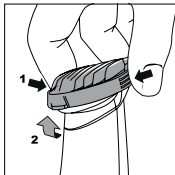
The body comb guide can be used to trim or blend hair on the key body zones including the chest & torso. To use the 3mm comb guide:

1. Attach the comb guide as shown in ATTACHING THE COMB GUIDES TO THE TRIMMER section.
2. Switch the trimmer on.
3. Hold the trimmer with the teeth of the trimmer pointing upwards, yet flat against the skin.
4. Move the trimmer upwards & outward through the hair you wish to trim.
5. The trimmer will work most efficiently when cutting through hair at its own speed.
6. To remove the comb guide, lift the rear of the guide upward & away from the 34mm trimming blade head.

USING THE TRIMMER WITHOUT THE COMB GUIDE

The trimmer can be used for detailing/shaping around the edge of the beard or to get a much closer result (0.4mm).

To remove the comb guide, squeeze the sides of the comb guide, which will release the back from the blade. Lift the guide away.



USING THE 34MM TRIMMING BLADE TO OUTLINE

The 34mm trimming blade without a comb guide attached will cut roughly to a length of 0.4 mm.

1. Do not attach a comb guide.
2. Hold the trimmer upside down with the blade facing downwards, yet flat against the skin.
3. Move the trimmer gently downwards in small strokes around the edge of the area you wish to outline.
4. Having defined the outline, hold the trimmer with the blades pointing upwards, yet flat against the skin & move the trimmer upwards against the direction of hair growth. This will trim the unwanted hair adjacent to the outline.

USING THE FOIL SHAVER

PREPARING THE SKIN

Before using the foil shaver, make sure that the skin is perfectly clean & free from grease or cream. Exfoliating the skin once or twice a week before shaving helps to maintain healthy & fresh skin, but it also helps to:

- Prevent hairs from growing under the skin, resulting in in-grown hairs
- Remove dead skin cells & refine the texture of your skin, resulting in a closer shave
- Prepare your skin to help it absorb skin care products.

We recommend exfoliating ideally the day before, as well as just before shaving. This will help straighten the hair & make it easier to shave. Avoid exfoliating just after shaving.

Having a warm shower before use will also help to soften the hair.

1. Attach the foil shaving head (see CHANGING THE HEADS instructions for details).
2. Switch the trimmer on by sliding the On/Off switch upwards so that the "I" marking is visible.
3. Always keep the shaver perpendicular to the surface to be shaved.
4. Always work with both hands: stretch the skin with one hand & move the trimmer with the other hand.
5. Slowly move the shaver, exerting light pressure. As a precaution, the operation of the trimmer may slow down substantially if the foil shaving head is pressed too hard against the skin.

Note: This foil shaver head is design to tidy up facial hair around the beard line or for small body hair areas. It is not designed for a full clean facial shave.

ATTACHING THE ROTARY BLADE

6. Insert the pin of the trimmer body into the hole of the trimmer head (See Fig. 4).
7. Line up the rear prong of the attachment head with the slot on the back of the handle (See Fig. 5).
8. The head should lean at an angle with the two front prongs of the head resting on the metal clips of the handle (See Fig. 6).
9. Click the head down onto the handle.

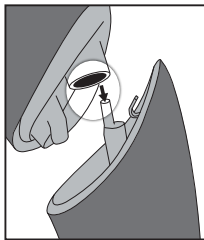


Fig. 4

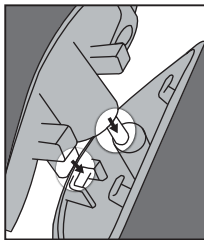


Fig. 5

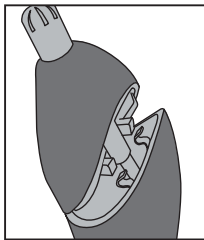


Fig. 6

USING THE ROTARY BLADE

The rotary blade has been designed for trimming those hard to reach places like nose & ear hair. No nicks or cuts.

1. Attach the rotary trimming blade.
2. Switch the trimmer on.
3. Insert the trimmer into the nose or ear & gently move the trimmer in a circular motion.
4. Always turn the trimmer on BEFORE you insert into your nostril or ear canal to avoid painfully snagging hairs.
5. Never insert the trimmer more than 5-6mm into your nose or ears.
6. Never turn the trimmer off whilst in the nose & ears.

TRIMMER CLEANING & MAINTENANCE

Because the trimmer blades are precision made for a very special use, they should always be handled with care. To ensure long-lasting performance of your trimmer, it is important to clean the blades + the comb guides after every use.

The blades are washable for easy cleaning.

To remove the trimming blade, follow the instructions as shown in **CHANGING THE ATTACHMENT HEADS**.

1. First, take a small brush & brush away any loose hairs that have collected in the blades.
2. Rinse the trimming blades under running water. The comb guides can also be rinsed separately.
3. After cleaning, make sure to shake off excess water & dry the head of the trimming blades + comb guide before replacing onto the handle.
4. Do not disassemble the blades.

OILING THE BLADES

Periodically, it may be necessary to oil the blades. After cleaning, attach a trimmer head, switch on & oil the blades using a few drops of the lubricating oil supplied. Only use the lubricating oil supplied with the trimmer as this is specifically formulated for high speed trimmers & does not evaporate or slow the blades.

KEEPING YOUR FOIL SHAVER IN TIP TOP SHAPE

To remove the foil shaver head, follow the instructions at CHANGING THE ATTACHMENT HEADS.

1. To make cleaning easier, the foil of the shaving head is removable.
2. To remove it, press the fasteners on its sides using your thumb & your index finger & lift it up.

BE CAREFUL NOT TO PUSH ON THE FOILS, THEY ARE DELICATE AND CAN EASILY BE DAMAGED.





3. Rinse the shaver cutter & foil frame under running water or in a sink. Do not use hot water. Use only warm or cold water.
4. After wet cleaning, allow the foil frame & cutters to air-dry before closing the foil frame & shaver head. The cutter can also be cleaned with a cleaning brush.
5. Replace shaver head back onto the handle until it clicks into place. Wipe the surface of the main unit with a dry towel. Do not dry the foil area. Let the shaving head air-dry.

NEVER use thinners, other solvents or any harsh cleaners.

6. Once the foil shaver is dried, carefully place the protective cap on.

WORLDWIDE VOLTAGE

This appliance has a multi voltage feature for worldwide use. The voltage automatically converts for ease of use from 100v - 240v. This appliance has an automatic internal converter which will automatically convert the voltage without the need of a switch. A suitable plug adaptor will be required, please refer to the chart below.

Plug adaptor required	Voltage and plug adaptors	Country	Voltage setting
	British plug: 240V	Ireland, Great Britain, Singapore, South America, Hong Kong (parts only), Africa (parts only)	240V
	European plug: 240V	Asia, Europe, Middle East Noumea, Scandinavia, South America, Hong Kong (parts only)	240V
	Australian and New Zealand plug: 230-240V	Australia, New Zealand	230-240V
	American plugs: 120V	North America, Japan, Canada (parts of)	120V

BATTERY DISPOSAL



The Groom Captain contains a Nickel Metal-Hydrate battery. To protect the environment, the appliance must be disposed of safely at the end of its useful life.

Please take the appliance to a recycling centre, where the internal rechargeable battery should be removed by a professional and recycled separately.

For more information about the recycling of electrical and battery operated appliances, please contact your local council office or your household waste disposal service.

WARRANTIES

1. In this warranty document ("Warranty Document"), "Conair", "we" or "us" means:
 - Conair Australia Pty Limited (ABN 64 068 492 044) of The Equinox Centre, Suite 101, 18 Rodborough Rd, Frenchs Forest, NSW, 2086, in relation to products purchased in Australia; or Conair New Zealand Ltd of Conair New Zealand Limited, PO BOX 251159 Pakuranga, Auckland 2140, New Zealand in relation to products purchased in New Zealand.
 - Nothing in this Warranty Document limits or reduces (or purports to limit or reduce) any statutory guarantees pursuant to the Australian Consumer Law for Australian customers or the Consumer Guarantees Act 1993 for New Zealand customers.
 - If you have any questions about the product you have purchased in either Australia or New Zealand, please contact us on 1800 650 263 (for Australian customers) or 0800 266 247 (for New Zealand customers). Further contact details are set out at the bottom of this Warranty Document.

STANDARD 2 YEAR (24 MONTH) WARRANTY

2. **AUSTRALIA:** Our goods come with guarantees that cannot be excluded under the Australian Consumer Law. You are entitled to a replacement or refund for a major failure and compensation for any other reasonably foreseeable loss or damage. You are also entitled to have the goods repaired or replaced if the goods fail to be of acceptable quality and the failure does not amount to a major failure.
NEW ZEALAND: Our goods come with guarantees that cannot be excluded under the Consumer Guarantees Act 1993. This guarantee applies in addition to the conditions and guarantees implied by that legislation.
3. Conair's name, postage address, email and phone number are available at the bottom of this Warranty Document, under "Contact Information".
4. This Standard 2 Year (24 Month) Warranty ("Standard Warranty") applies for a period of 2 years (24 months) from the date that you purchased your product ("Standard Warranty Period"). For clarity, the relevant defect must appear within the Standard Warranty Period timeframe for this Standard Warranty to apply.
5. If your product is defective, and the product is covered under this Standard Warranty, you should, in the first instance, take the product back to the place you purchased it from or contact us directly if you are unable to take the product back to the place of purchase. The

procedure for claiming under this Standard Warranty is as detailed below.

6. To make a Standard Warranty claim, you will need to return the defective product back to the place it was purchased where it will be assessed under this Standard Warranty. Or if you are unable to return the defective product back to the place of purchase, you will need to call our Customer Service team on 1800 650 263 (for Australian Customers) or 0800 266 247 (for New Zealand customers) or send an email to the email address provided below under 'Contact Information'.
7. **In order to make a claim under this Standard Warranty, you will need to provide the following details to Conair:**
 1. **Date of purchase**
 2. **Retailer name & location**
 3. **Product model number & name**
 4. **Confirm you have your purchase receipt**
 5. **Detail the problem with your product.**
8. If you make a Standard Warranty claim directly with us, we will ask for you to send us back the defective product along with the purchase receipt. To do this, please head to your local post office and send to the product to our reply paid address which is: Reply Paid 146, PO Box 146, Terrey Hills NSW 2084. For clarity, we will be responsible for covering the cost of postage to the above reply paid address.
9. Once we receive your product, we assess it accordingly. Upon analysing the defect, we will either: a) have the product replaced and sent back to you; or b) refund you (either in part or in full).
10. The benefits provided to you under this Standard Warranty are in addition to other rights and remedies available to you under consumer law.
11. Within the Standard Warranty Period, if your product suffers a defect in the materials or workmanship, Conair will either refund or replace your product, in our sole discretion, for no charge.
12. Under this Standard Warranty, we do not have to refund, repair or replace your product if the product's defect or damage is a result of misuse, abuse, accident, act of God such as lightning, or nonobservance of Conair's instruction booklet on the part of the user.
13. The Standard Warranty does not cover ordinary wear and tear of the product.
14. This Standard Warranty is immediately void if: a) any serial number or product plate is removed or defaced, or b) the product has been serviced or otherwise repaired by a person not authorised to do so by Conair or where non-approved replacement parts are used.

15. You are aware that the product is designed for domestic use only and that it must be connected to the electrical voltage supply as specified in the ratings label located on the product itself and detailed in the product's instruction booklet. The Standard Warranty does not cover defects arising from non-domestic use or use of incorrect voltage supply.
16. This Standard Warranty may only be claimed where proof of original purchase is presented, for example, original receipt or invoice.
17. The Standard Warranty on any replacement product or parts will expire on the same date that the Standard Warranty Period on the original product expires, as far as the law permits.
18. In order to obtain a remedy under this Standard Warranty, the defect must have occurred during this Standard Warranty Period and you (as the purchaser) bear the onus of proving that fact, and that the defect was not caused by any of the exclusions above.
19. This Standard Warranty does not cover any product purchased from any entity who is not an authorised Conair distributor or reseller. For clarity, all warranties are only enforceable in Australia and New Zealand.
20. To the fullest extent permitted by law, Conair does not accept liability for: a) any loss or damage however suffered, caused by or arising out of any failure to use a product in accordance with Conair's instruction booklet; and b) any indirect, consequential or economic loss or damage however caused.
21. We will be responsible for all postage and freight charges and any other expenses incidental to claiming under the Standard Warranty, however you must send the product back to our Reply Paid address (which is: Reply Paid 146, PO Box 146, Terrey Hills NSW 2084).
22. If your product is defective, and the product is covered by this Standard Warranty, you should take the product back to the place you purchased it from or contact us directly using the contact information provided in the Contact Information section below.
23. To honour the Standard Warranty, you must retain your proof of original purchase, for example, original receipt or invoice and you must present the proof of original to obtain replacement, refund or service under this Standard Warranty, alongside your defective product.
24. You understand that the Standard Warranty may only be claimed where proof of original purchase is presented, i.e. original purchase receipt or invoice. When asked to do so, please provide your proof of original purchase along with the requested information/defective item.

SPARE PARTS

25. Replacement parts may be available for your product. Contact us on the phone or email address provided for more details. Please provide your product name/model number details, date of purchase and part you require.

CONTACT INFORMATION

Conair Australia Pty Ltd

PO Box 146 Terrey Hills NSW 2084

Customer Service

Australia

1800 650 263

email: aus_info@conair.com

Conair New Zealand Ltd

PO Box 251159 Pakuranga, Auckland New Zealand 2140

Customer Service

New Zealand

0800 266 247

email: aus_info@conair.com



©2023 Conair Australia Pty. Ltd.
Suite 101, 18 Rodborough Rd
Frenchs Forest NSW 2086
Australia

Conair New Zealand Limited
PO BOX 251159
Pakuranga, Auckland 2140
New Zealand

CONTACT US

For advice & tips on your new ConairMan product email us on:
aus_info@conair.com

CUSTOMER SERVICE

Australia: 1800 650 263
New Zealand: 0800 266 247

Check out CONAIRMAN.COM.AU for grooming tips & know how to let you craft a reputation.

CONAIRMAN™

**CRAFT A
REPUTATION,
MY MAN**