

A close-up portrait of a man with a short beard and mustache, wearing a white dress shirt and a black necktie. He is looking directly at the camera with a serious expression and is adjusting the knot of his tie with both hands. He is wearing a silver ring on his left ring finger. The background is a dark, neutral grey.

CONAIR MAN[®]

PRODUCT CATALOGUE

JB HI-FI

THE CHROME PRO

PRECISION GROOMING RANGE

Introducing the CHROME PRO Range, the ultimate barber-grade grooming tools.

Crafted with sleek chrome heads and aluminum-textured grip handles, the CHROME PRO Range is built for durability and pro-level handling. Not only for performance, but also for amazing looks.



Experience the cutting edge of grooming with ultra-durable Japanese steel blades, designed for maximum sharpness and longevity. The CHROME PRO Range ensures a flawless, professional-grade cut every time.

Go cordless with confidence. The CHROME PRO Range is designed to do the job anywhere and anytime, whether you're at home or on the move.

Each tool has its own premium hard storage case with interior designed to store each item to ensure your tools & accessories are well-protected.

Stay sharp no matter where life takes you.

PRECISION CLIPPER

HEAD



CM6500A
RRP: \$149.95

BARBER INSPIRED PROFESSIONAL CLIPPER

Durable and precise for professional-grade accuracy and results.

PERFECT CLEAN FADES

Professional comb guide lengths #0, #0.5, #1, #2, #3, #4, #5, #6.

DEFINE YOUR LOOK

5 position taper control for blending layers and a precise close trim, every time.

STAY SHARP & ORGANISED

Includes full grooming & trimming accessories - Premium storage case, barber comb, scissors, blade guard, cleaning brush & oil.



LITHIUM-ION POWER

For sustained power performance with fast charging & long-lasting cordless use.



CURVED COMB GUIDES

Conforms directly to the shape of the head for precise even cutting.



WORLDWIDE VOLTAGE & TRAVEL LOCK

Keep well groomed wherever you go.



JAPANESE BLADES

Self-sharpening stainless steel blades.



USB 20MIN QUICKCHARGE

for 20min cordless runtime.

RECHARGEABLE

3 HOUR CORDLESS RUNTIME.
GO ANYWHERE.

STORAGE CASE

WITH SEPERATE COMPARTMENTS
TO SAFELY STORE AND PROTECT
STAY ORGANISED.



3 YEAR WARRANTY

PRECISION GROOMING KIT

ALL-IN-ONE



CM100A
RRP: \$149.95

BARBER INSPIRED PRECISION GROOMING

Durable and precise for professional-grade accuracy and results.

LITHIUM-ION POWER BATTERY

For sustained power & performance with fast charging and 5 hours cordless use.

DEFINE YOUR LOOK

6 different comb guides for all trimming needs. 2 Body combs, 3 Jawline combs and a five length adjustable comb guide.

TACKLE ALL BODY ZONES

Includes 4 different quick change magnetic heads.



JAPANESE BLADES

Self-sharpening stainless steel blades.



WORLDWIDE VOLTAGE & TRAVEL LOCK

Keep well groomed wherever you go.



MAGNETIC ATTACHMENT HEADS

For quick & easy function change.



SHOWERPROOF

For versatile wet or dry use.



USB 20MIN QUICKCHARGE

for 20min cordless runtime.

RECHARGEABLE

3 HOUR CORDLESS RUNTIME.
GO ANYWHERE.

STORAGE CASE

WITH SEPERATE COMPARTMENTS
TO SAFELY STORE AND PROTECT
STAY ORGANISED.



3 YEAR WARRANTY

CONAIRMAN

NEW

THE ELITE SERIES

Pro-Engineered Power. Unmatched Precision. Ultimate Control.

Step into the next generation of self-grooming with the Elite Series — a lineup built for those who demand professional-grade results on their own terms. Engineered with titanium-coated Japanese steel blades for maximum durability and ultra-precise cutting performance, every tool in the range is designed to deliver smooth, consistent, barber-quality results.



Powered by advanced motor technology — from the CREW CUT ELITE's refined rotary cutting system that cuts in any direction for effortless self-clipping, to THE ELITE CLIP's heavy-duty DC motor delivering 6× more cutting power — this range is built to handle all hair types with speed, force, and finesse.

Corded or cordless, at home or on the move, every tool gives you the freedom to maintain your look your way. With long-lasting lithium-ion performance, innovative comb-guide systems for cleaner blending and shaping, and premium travel-ready protection, the Elite Head-Grooming Range ensures you stay sharp no matter where life takes you.

Precision. Power. Performance.

This is grooming engineered for those who want more than a cut — they want a reputation.

A STATE-OF-THE-ART HAIR CLIPPER WITH THE PRECISION OF JAPANESE STEEL & THE POWER OF LITHIUM-ION.

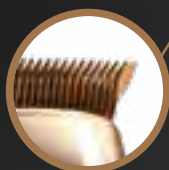
THE ELITE CLIP

THE ELITE HAIR CLIPPER FOR BEST-IN-CLASS RESULTS

HEAD



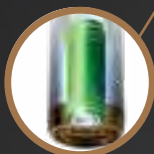
VSM6000A
RRP: \$139.95



TITANIUM COATED PREMIUM JAPANESE STEEL BLADES

USB CORDLESS RECHARGEABLE

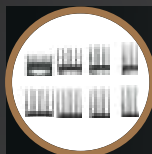
120min cordless use so you are always ready with micro USB capability.



LITHIUM-ION POWERED

provides enhanced power for long-lasting cordless use.

EXTENDED 5 YEAR MOTOR WARRANTY



BARBER STYLE COMB GUIDES

Extra-firm professional nylon comb guides are engineered for durability, to give the most exact & even cut, every time.



PROFESSIONAL FADED RESULTS

New fade comb guide effectively blends lines for a perfect faded result compared to standard comb guides, for professional barber-style results at home >.



PRECISION FINISH

Integrated ear comb guide effortlessly cuts around the ears from any angle, for a quicker finish than standard ear comb guides.



TRAVEL IN STYLE

Premium storage case protects your clipper, comb guides & accessories. Ideal for home or on-the-go.



ACCESSORIES INCLUDED

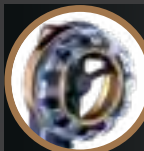
Includes blade guard, barber comb, barber cape, scissors, micro USB charging cable, power adaptor, cleaning brush & oil.

THE CREW CUT ELITE

THE ULTIMATE SELF-CUT CLIPPER

HEAD

THE STATE-OF-THE-ART DIY SHORT OR CREW CUT CLIPPER WITH THE PRECISION OF JAPANESE STEEL & THE POWER OF LITHIUM-ION.



LOCK IN THE LOOK

Advanced lock-in comb guide for grades #1 - 4 (3mm to 13mm) provides more consistent cutting results for the best at-home short hair or crew cut look.



WASHABLE BLADES

EASY CLEANING

Washable blades allow easy cleaning so your Crew Cut Elite & finishing trimmer are always ready.



TRAVEL IN STYLE

Premium storage case protects your clipper, comb guides & accessories. Ideal for home or on-the-go.



ACCESSORIES INCLUDED

Includes scissors, comb, power adaptor, cleaning brush & oil.

TITANIUM COATED PREMIUM JAPANESE STEEL BLADES

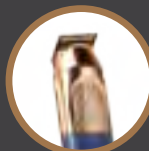


LITHIUM-ION POWERED

provides enhanced power for long-lasting cordless use.



VSM7500A
RRP: \$169.95



DEFINE YOUR LOOK

Integrated lithium-ion powered finishing trimmer with attachment trimmer head to sharpen up your grooming game.

EXTENDED 3 YEAR MOTOR WARRANTY

HEAD

The Head Honcho



JB EXCLUSIVE

CM901A
RRP \$99.95
 Warranty: 2 years

THE REIGNING SUPREME HEAD GROOMER FOR EFFORTLESSLY SMOOTH SHAVES.

- Lithium-ion power for sustained power performance with fast charging & long-lasting cordless use.
- 4 Independent floating blade holders on a floating main head for ultimate contour results.
- Trimmer attachment to prepare longer hair for shaving and includes comb guides for beard trimming.
- 6 ultra thin double ring cutter net blades on outer and 3 smaller centre blades for closer & consistent cutting
- Lithium battery with USB fast charging in 3 hours charging and cordless runtime of 1.5 hours
- 40mm trimmer attachment to prepare longer hair for shaving and includes comb guides for beard trimming
- Waterproof IPX 7 for use in the shower
- Worldwide voltage & safety lock for safe travel and use on the go

FACE

XPERT Precision



VSM50MA
RRP \$26.95
 Warranty: 2 years

THE BEST-IN-CLASS NOSE & EAR HAIR TRIMMER FOR EXPERT RESULTS

- Durable semi-metal housing & compact design with a slim shape for easy grip
- Diamond-Protect Technology with patent pending diamond-shaped 360° capture blade protects against pulling, nicks & cuts, guaranteed
- Three-Bevel Blade System cuts from the top, middle & bottom of the blade for 3x more* effective cutting
- Removable hygienic cap to help keep trimmer head clean when stores or on-the-go
- Removable, washable blades for your cleanest cut
- No need to oil after use
- Includes 1x AA battery

* 3x more effective cutting compared to a standard ConairMan rotary nose trimmer.

ALL-IN-ONE

The All Rounder



VSM837A
RRP \$64.95
 Warranty: 2 years

THE WATERPROOF MULTI-PURPOSE FACE & BODY TRIMMER

- Precision W-Tech blades - High-performance, high-strength steel blades cut 25% faster*
- 3 attachments + 3 comb guides: 32mm Trimming Blade + Foil Shaver + Rotary Blade + 7 position comb guide (2mm – 14mm) + 7 position comb guide (3mm – 15mm) for beard & hair trimming + 6 position precision comb guide (0.5mm – 3mm) for stubble trimming
- 40min cordless runtime
- Convenient storage & charging stand
- 100% waterproof
- Worldwide voltage

*Compared to ConairMan stainless steel blades.

JB HI-FI RANGE SUMMARY

HEAD



JB EXCLUSIVE

HEAD HONCHO

CM901A
RRP: \$99.95

NEW



ELITE CLIP

VSM6000A
RRP: \$139.95

NEW



CHROMEPRO CLIP

CM6500A
RRP: \$149.95

NEW



CREW CUT ELITE

VSM7500A
RRP: \$169.95

FACE



XPERT PRECISION

VSM50A
RRP: \$26.95

ALL IN ONE



ALL ROUNDER

VSM837A
RRP: \$64.95

NEW



CHROMEPRO GROOM

CM100A
RRP: \$149.95

CONAIRMAN



CUSTOMER SUPPORT

ConairMan customers can call the friendly Conair customer service team at any time on 1800 650 263 or email aus_info@conair.com
Thank you for your ongoing support. For more information please contact your local sales representative.

conairman.com.au